

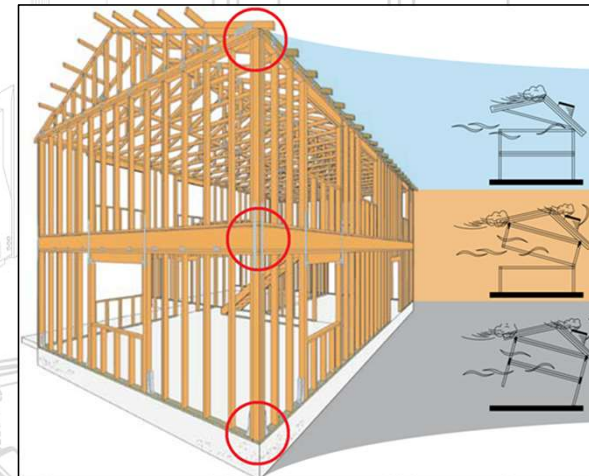
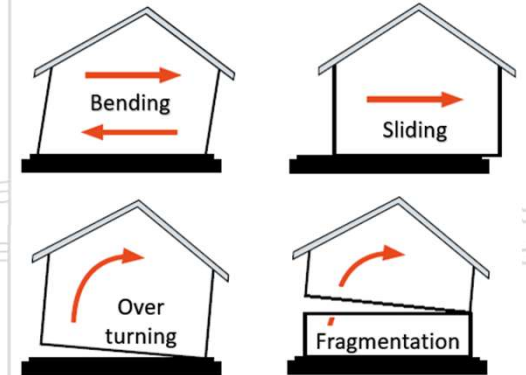
The background of the slide is a photograph of a modern building's interior. It features a large, multi-paned glass skylight that allows bright sunlight to stream in, creating a lens flare effect. The building's structure is made of light-colored concrete or stone, with visible beams and supports. The overall atmosphere is bright and airy.

To provide the most trusted
construction solutions that
help people design and build
safer, stronger structures

Timber structures and design principles

Continuous load path system

- Main structure connection solutions to the foundations
- Floor to Floor connection
- Roof structure and Truss connections to the building



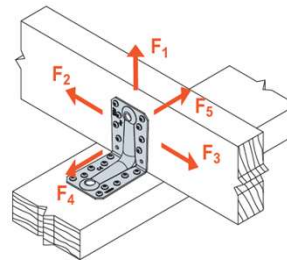
Main principles of how to indicate proper connectors in Timber structures

- Difference - Design values and Characteristic values
- How to read technical data in catalogues and ETA
- Most common failures

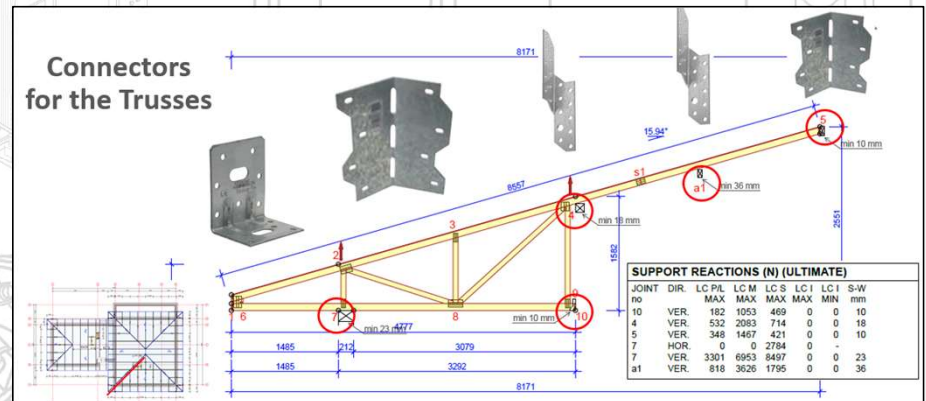
Beam to Beam connection (full nailing) ●●

References	Fixing		Characteristic capacities Timber C24 - 2 angle brackets per connection [kN]		
	Flange A	Flange B	$R_{1,k}$	$R_{2/3,k}$	$R_{4/5,k}$
ABR7015 ABR7015Z	6xCNA4,0x40	8xCNA4,0x40	6,1	7,3	$4,8/k_{mod}^{0,3}$
ABR9020 ABR9020Z	8xCNA4,0x40	10xCNA4,0x40	10,8	10,3	$4,9/k_{mod}^{0,7}$
ABR10525 ABR10525Z	10xCNA4,0x40	14xCNA4,0x40	17,2	12,2	$11,5/k_{mod}^{0,4}$
	10xCNA4,0x60	14xCNA4,0x60	29,5	19,7	$13,1/k_{mod}^{0,8}$

To obtain the resistance values for a single bracket, the values in the above table should be divided by two, provided that the supported beam is locked in rotation. Please consult our ETA-06/0106 if the beam is free to rotate

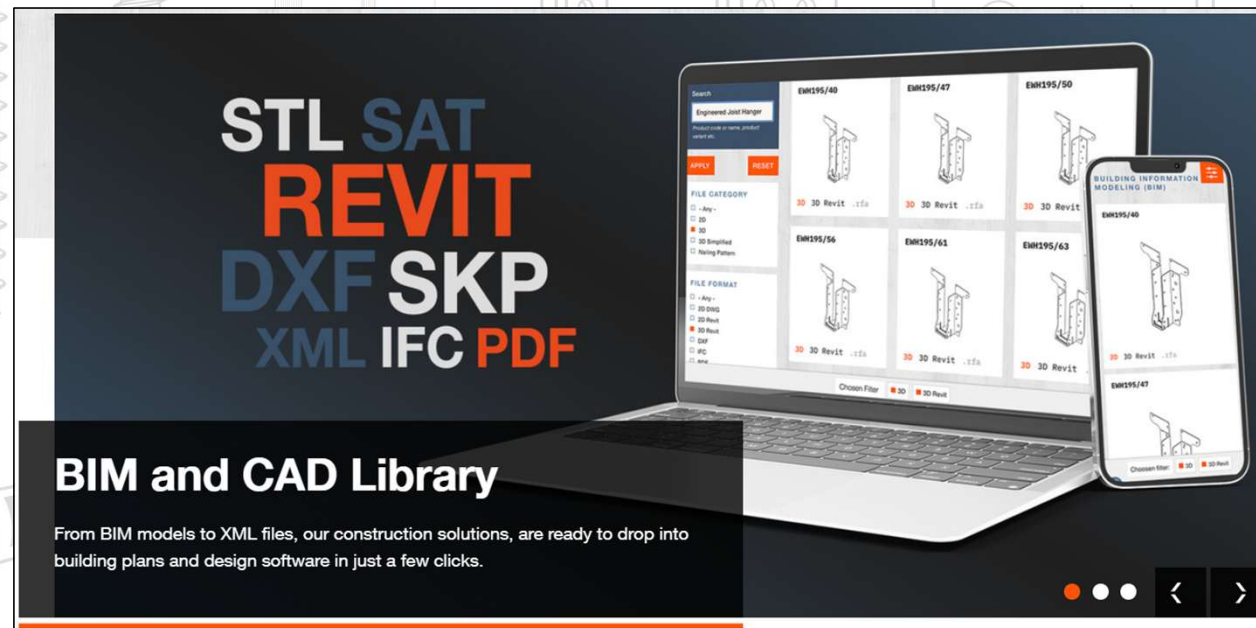
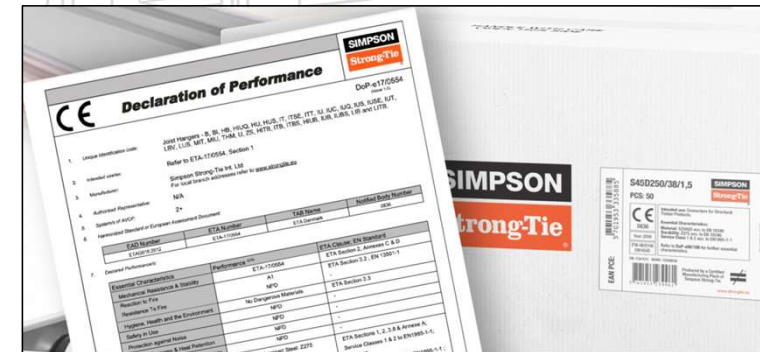


LOAD SCHEME
Beam to Beam
2 angle brackets per connection



Available recourses, where to find

- BIM files
- Technical data sheets and product capacities
- Online software
- DoP, ETA





Janis Riekstins
Export Sales & Technical Manager

Simpson Strong-Tie Etanco P.S.A.
ul. Karczunkowska 42
02-871 Warszawa
+ 371 28 00 55 26
jriekstins@strongtie.com
www.strongtie.lv



SIMPSON